

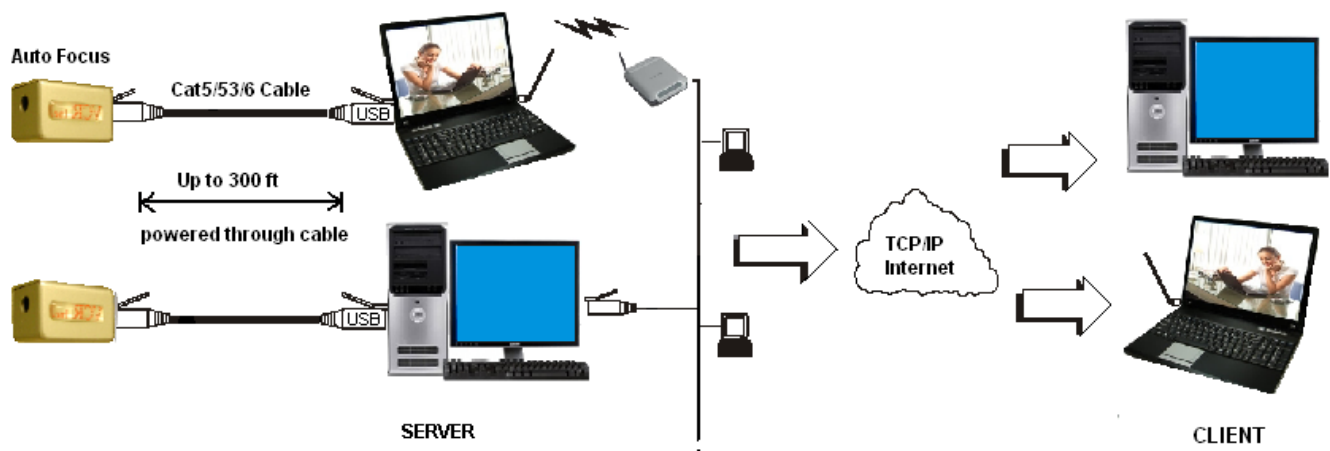
# 2 MEGA PIXEL USB CAMERA

*Model: VCU2M Series*

## High Lights:

- Digital Color Camera
- Display, record and transmit at High Definition 1600x1200 (2 Mega pixel)
- Auto focus, low lux
- Connects through USB port
- Transmit video using CAT5,CAT5e or CAT6
- Operates to 300 ft. without separate power supply
- Small size

**General Features:** VCR Inc. 2 Mega Pixel USB Camera (VCU2M series) is a small discreet camera that fits into a very small space. It provides superb video imaging and the High Definition property meets the demand for bigger picture and at the same time provides clear and sharp images. Compatibility with a variety of PC system is made easy for system integration through USB port. No separate power supply is needed since power is obtained from the PC system through the LAN (Cat5/5e/6) cable. The current web cam can only provide connection for a few feet from the PC. The VCU2M can be operated at a distance at 300ft.



## Software Features:

The software provided allows display, record, playback and network reviewing.

Video display window is scalable to the preferred size without sacrificing video quality. User has control over image control for sharpness and flip or mirror image in case camera is installed upside down. Auto exposure controls the sensitivity of the camera in response to environmental lighting. With proper setting, the VCU2M can capture good quality image under very low lux. Recording in High Definition images allows reviews in more details and sharp image. The same High Definition image can be transmitting through TCP/IP Internet. Remote viewer can select an area of interest for faster refreshing rate. This refresh window can be resized, moved or relocated when required.

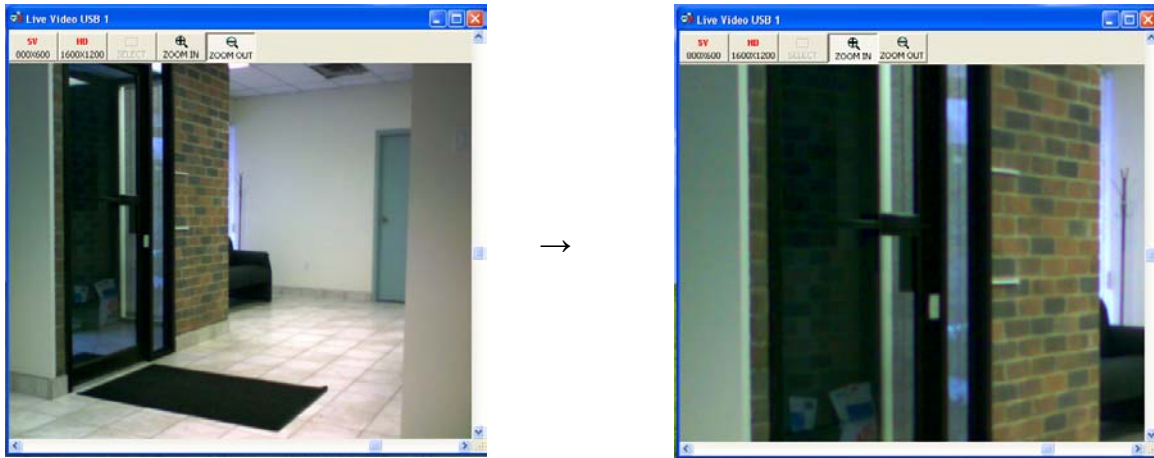
*Specifications are subject change due to availability.  
Parts may be replaced with similar or better quality/grade.*

*Page 1 of 4  
Model: VCU2M*

© Video Communication Research Inc.

1289 Matheson Blvd. E, Mississauga, ON, Canada L4W 1R1 Web site: <http://www.vcrinc.com>  
Phone: (905) 238-6884 Fax: (905) 238-8207

## Zoom and Scroll:



## Selective Remote View:



One can draw a red square over an area of interest on the video. This is called a Refresh Window. The video will only refreshes in the area covered by this red square. Areas outside the square remains unchanged. The red square can be draw anywhere on the video and at any size larger than 80x60 pixels. The video under this area can also be zoom in for more details. This feature allows faster video transmission for the area of interest and therefore giving faster frame rate for viewing actions taken place at this area.

*Specifications are subject change due to availability.  
Parts may be replaced with similar or better quality/grade.*

*Page 2 of 4  
Model: VCU2M*

**© Video Communication Research Inc.**

1289 Matheson Blvd. E, Mississauga, ON, Canada L4W 1R1 Web site: <http://www.vcrinc.com>  
Phone: (905) 238-6884 Fax: (905) 238-8207

## Specifications:

<b>Pick up Element</b>	1/3 inch digital color image sensor
<b>Number of Pixel (H X V)</b>	2 Mega active pixels
<b>Resolution</b>	800 x 600, 1600 x 1200 (display and record)
<b>Video Compression:</b>	H.264 transmission
<b>Video Image:</b>	AVI for video, JPEG for still image
<b>Video Control:</b>	Image size and quality, time stamp, flip and mirror, zoom in/out
<b>Focal Length</b>	5mm
<b>F No.</b>	F2.8
<b>Focus Area</b>	Min. 300 mm
<b>Exposure</b>	Auto exposure/manual exposure
<b>Flicker</b>	Auto or selectable
<b>Recording Control</b>	Continuous and scheduled, rate /quality control, motion activated.
<b>System Control</b>	User name and password, system reboot schedule
<b>Playback Control</b>	Rate / size / zoom control, single frame capture
<b>Networking Protocol</b>	TCP/IP, 10/100 Base T Ethernet
<b>Power Source</b>	Through CAT5/5e/6 Cable

## System Requirement:

<b>Operating System:</b>	Windows XP / Vista Home Premium or better
<b>Mother</b>	Intel Chipset compatible
<b>CPU:</b>	Pentium 4, 3.0 GHz or better
<b>RAM:</b>	256 MB minimum
<b>VGA:</b>	2 Megabyte video memory, minimum 800x600 resolution @24 bit colors
<b>USB:</b>	Version 2.0
<b>Hard Drive:</b>	20 GB minimum for Application Programs 10 to 30 GB per day per camera for video storage
<b>CD-ROM:</b>	24X or better for software installation
<b>LAN: (optional)</b>	10/100M BASE Ethernet card or integrated chip for Networking
<b>Monitors:</b>	Minimum 800 x 600 resolution, preferred 1280 x 1024 or better

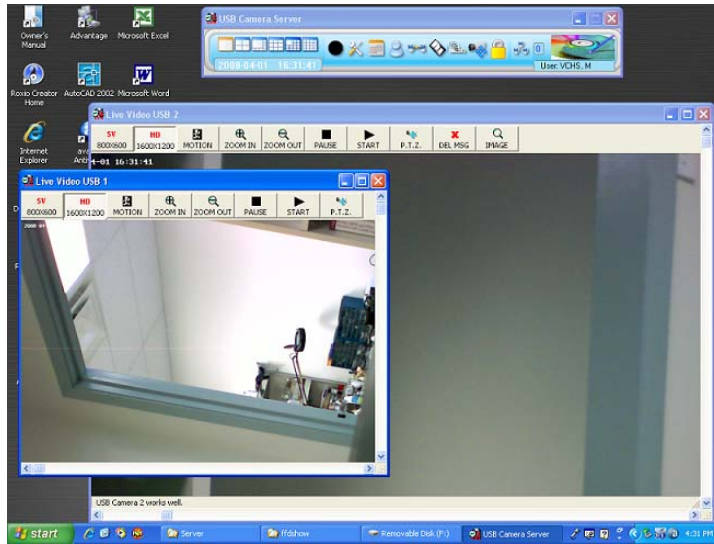
*Specifications are subject change due to availability.  
Parts may be replaced with similar or better quality/grade.*

*Page 3 of 4  
Model: VCU2M*

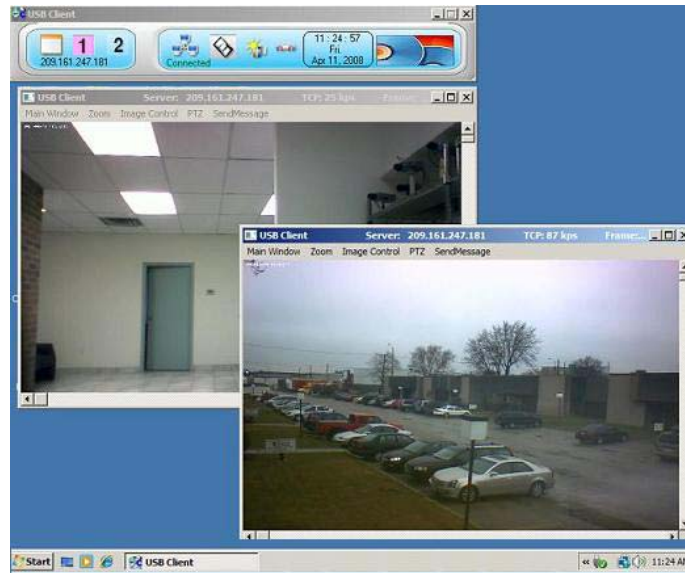
### © Video Communication Research Inc.

1289 Matheson Blvd. E, Mississauga, ON, Canada L4W 1R1 Web site: <http://www.vcrinc.com>  
Phone: (905) 238-6884 Fax: (905) 238-8207


**Software:**  
**Server:**



**Client:**



**Model:**

Part Number:	Physical Features:	Package Contents:
VCU2MA: 	<ul style="list-style-type: none"> <li>• Bullet style</li> <li>• 27x27x47mm</li> </ul>	<ul style="list-style-type: none"> <li>• Camera</li> <li>• Mount</li> <li>• USB adaptor</li> <li>• Software CD</li> <li>• Digital Manual</li> <li>• LAN test cable for first order</li> </ul>

*Specifications are subject change due to availability.  
Parts may be replaced with similar or better quality/grade.*

*Page 4 of 4  
Model: VCU2M*

**© Video Communication Research Inc.**

1289 Matheson Blvd. E, Mississauga, ON, Canada L4W 1R1 Web site: <http://www.vcrinc.com>  
Phone: (905) 238-6884 Fax: (905) 238-8207